

# HVIZ

[www.cnhviz.com](http://www.cnhviz.com)



不锈钢系列接头

Stainless Steel Fittings

# 316L Stainless Steel Fittings

## 316L不锈钢系列接头

### SPECIFICATIONS 技术参数

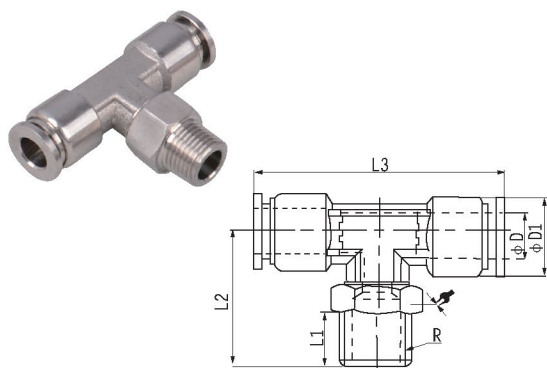
Fluid 使用流体	Air, Water, Steam 空气、水、蒸气等
Operating Pressure 使用压力范围	0~1.5MPa
Max Pressure 耐压	1.8 Mpa
Operating Temperature 使用温度范围	-20℃~140℃

\* The material of all series can be replaced with brass.  
全系列产品材质可替成全铜

### FEATURES 特点

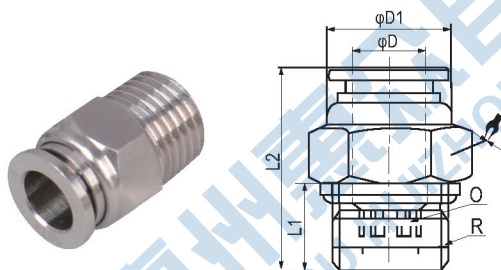
- The materials ensure Anti-Corrosion highly, all of them are made from SUS316L except the seal ring. 除密封圈外所有零件都采用SUS316L材料制成这种材料具有很强的抗腐蚀能力。
- FKM is used as the seal ring, which can ensure Anti-Corrosion and acid resistant, also can be used in high temperature. 密封圈采用氟橡胶(FKM),这种材料抗化学腐蚀性能力很强而且耐酸、耐高温。
- The accessories are oil-free and reach the Food Hygiene Law of People's Republic of China, which are applied widely in the range of industry such as food service industry, chemical industry and medical industry. 这些零件都属于无油规格并符合食品卫生法广泛应用于食品、化学、医疗等工业。

### H-SSB 螺纹正三通



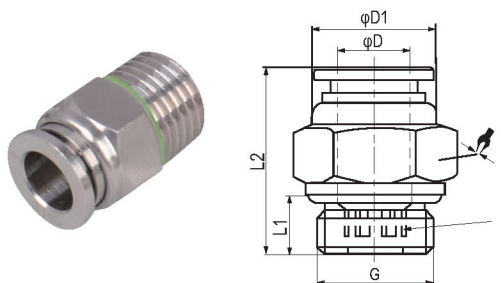
Model 型号	φD	R	L1	L2	L3	φD1	↻
H-SSB04-01	4	R1/8	7.5	20	36.6	10	10
H-SSB06-01	6	R1/8	7.5	23	40.6	12	12
H-SSB06-02	6	R1/4	9.5	23	40.6	12	14
H-SSB08-01	8	R1/8	7.5	23.5	44.6	14	12
H-SSB08-02	8	R1/4	9.5	23.5	44.6	14	14
H-SSB10-02	10	R1/4	9.5	33	52.8	17	17
H-SSB10-03	10	R3/8	10.5	30	52.8	17	17
H-SSB10-04	10	R1/2	13.5	32	52.8	17	21
H-SSB12-02	12	R1/4	9.5	34.5	58.8	20	17
H-SSB12-03	12	R3/8	10.5	31.5	58.8	20	17
H-SSB12-04	12	R1/2	13.5	33.5	58.8	20	21

### H-SSC 螺纹直通



Model 型号	φD	R	L1	L2	φD1	○	↻
H-SSC04-01	4	R1/8	7.5	16.8	10	3	10
H-SSC06-01	6	R1/8	7.5	19.3	12	4	12
H-SSC06-02	6	R1/4	9.5	19.8	12	4	14
H-SSC08-01	8	R1/8	7.5	23.7	14	6	14
H-SSC08-02	8	R1/4	9.5	22.2	14	6	14
H-SSC10-02	10	R1/4	9.5	26.4	17	8	17
H-SSC10-03	10	R3/8	10.5	22.9	17	8	17
H-SSC10-04	10	R1/2	13.5	26.5	17	8	21
H-SSC12-02	12	R1/4	9.5	30.4	20	8	20
H-SSC12-03	12	R3/8	10.5	26.4	20	10	20
H-SSC12-04	12	R1/2	13.5	26.4	20	10	21

### H-SSC-G 螺纹直通-G 螺纹

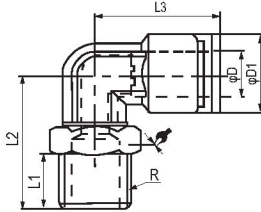


Model 型号	φD	G	L1	L2	φD1	○	↻
H-SSC04-M5	4	M5	4	19.3	10		10
H-SSC04-M6	4	M6	4	19.3	10		10
H-SSC04-G01	4	G1/8	5.5	17.3	10	3	13
H-SSC04-G02	4	G1/4	6.5	17.3	10	3	16
H-SSC06-M5	6	M5	4	20.6	12		12
H-SSC06-G01	6	G1/8	5.5	18.8	12	4	13
H-SSC06-G02	6	G1/4	6.5	18.8	12	4	16
H-SSC08-G01	8	G1/8	5.5	23.2	14	5	14
H-SSC08-G02	8	G1/4	6.5	20.7	14	6	16
H-SSC10-G02	10	G1/4	6.5	26.4	17	8	17
H-SSC10-G03	10	G3/8	7.5	22.9	17	8	20
H-SSC10-G04	10	G1/2	9	25.5	17	8	24
H-SSC12-G02	12	G1/4	6.5	29.4	20	8	20
H-SSC12-G03	12	G3/8	7.5	25.4	20	10	20
H-SSC12-G04	12	G1/2	9	25.4	20	10	24

# 316L Stainless Steel Fittings

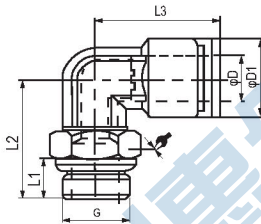
## 316L不锈钢系列接头

### H-SSL L型螺纹弯头



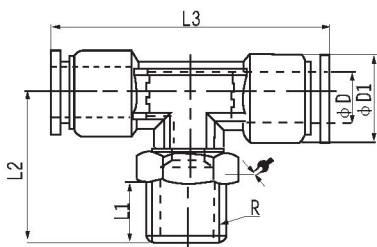
Model 型号	$\phi D$	R	L1	L2	L3	$\phi D1$	$\alpha$
H-SSL04-01	4	R1/8	7.5	20	18.3	10	10
H-SSL06-01	6	R1/8	7.5	23	20.3	12	12
H-SSL06-02	6	R1/4	9.5	23	20.3	12	14
H-SSL08-01	8	R1/8	7.5	23.5	22.3	14	12
H-SSL08-02	8	R1/4	9.5	23.5	22.3	14	14
H-SSL10-02	10	R1/4	9.5	33	26.4	17	17
H-SSL10-03	10	R3/8	10.5	30	26.4	17	17
H-SSL10-04	10	R1/2	13.5	32	26.4	17	21
H-SSL12-02	12	R1/4	9.5	34.5	29.4	20	17
H-SSL12-03	12	R3/8	10.5	31.5	29.4	20	17
H-SSL12-04	12	R1/2	13.5	33.5	29.4	20	21

### H-SSL-G L型螺纹弯头 -G 螺纹



Model 型号	$\phi D$	R	L1	L2	L3	$\phi D1$	$\alpha$
H-SSL04-M5	4	M5	4	17.5	18.3	10	10
H-SSL04-G01	4	G1/8	5.5	20	18.3	10	13
H-SSL06-M5	6	M5	4	17.5	20.3	12	10
H-SSL06-G01	6	G1/8	5.5	22	20.3	12	13
H-SSL06-G02	6	G1/4	6.5	23	20.3	12	16
H-SSL08-G01	8	G1/8	5.5	22.5	22.3	14	13
H-SSL08-G02	8	G1/4	6.5	23.5	22.3	14	16
H-SSL10-G02	10	G1/4	6.5	31	26.4	17	17
H-SSL10-G03	10	G3/8	7.5	28.5	26.4	17	20
H-SSL10-G04	10	G1/2	9	29	26.4	17	24
H-SSL12-G02	12	G1/4	6.5	32.5	29.4	20	17
H-SSL12-G03	12	G3/8	7.5	30	29.4	20	20
H-SSL12-G04	12	G1/2	9	30.5	29.4	20	24

### H-SSB-G 螺纹正三通 -G 螺纹



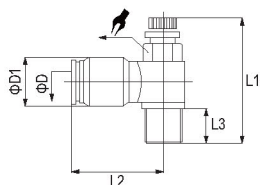
Model 型号	$\phi D$	G	L1	L2	L3	$\phi D1$	$\alpha$
H-SSB04-M5	4	M5	4	17.5	36.6	10	10
H-SSB04-G01	4	G1/8	5.5	20	36.6	10	13
H-SSB06-M5	6	M5	4	17.5	40.6	12	10
H-SSB06-G01	6	G1/8	5.5	22	40.6	12~	13
H-SSB06-G02	6	G1/4	6.5	23	40.6	12	16
H-SSB08-G01	8	G1/8	5.5	22.5	44.6	14	13
H-SSB08-G02	8	G1/4	6.5	23.5	44.6	14	16
H-SSB10-G02	10	G1/4	6.5	31	52.8	17	17
H-SSB10-G03	10	G3/8	7.5	28.5	52.8	17	20
H-SSB10-G04	10	G1/2	9	29	52.8	17	24
H-SSB12-G02	12	G1/4	6.5	32.5	58.8	20	17
H-SSB12-G03	12	G3/8	7.5	30	58.8	20	20
H-SSB12-G04	12	G1/2	9	30.5	58.8	20	24

# 316L Stainless Steel Fittings

## 316L不锈钢系列接头

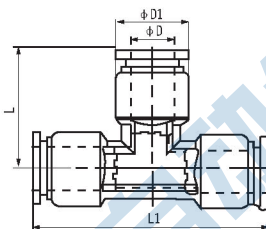


### H-ASS 不锈钢截流阀



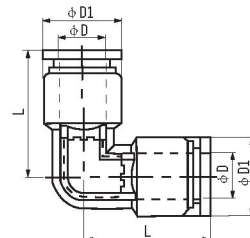
Model 型号	$\phi D$	R	L1	L2	L3	$\phi D1$	$\curvearrowright$
H-ASS-04-01	4	1/8	34.5	28	7.5	10.5	12
H-ASS-04-02	4	1/4	43	28	9.5	10.5	14
H-ASS-06-01	6	1/8	34.5	28	7.5	12.5	12
H-ASS-06-02	6	1/4	43	28	9.5	12.5	14
H-ASS-08-01	6	1/8	34.5	30	7.5	14.5	12
H-ASS-08-02	8	1/4	43	30	9.5	14.5	14
H-ASS-08-03	8	3/8	47.3	33	10.5	14.5	19
H-ASS-08-04	8	1/2	51	33	12.5	14.5	22
H-ASS-10-02	10	1/4	43	32.5	9.5	17.5	14
H-ASS-10-03	10	3/8	47.3	35	10.5	17.5	19
H-ASS-10-04	10	1/2	51	35	12.5	17.5	22
H-ASS-12-02	12	1/4	43	36	9.5	20.5	14
H-ASS-12-03	12	3/8	47.3	38	10.5	20.5	19
H-ASS-12-04	12	1/2	51	38	12.5	20.5	22

### H-SSE 联管正三通



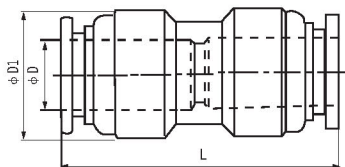
Model 型号	$\phi D$	$\phi D1$	L	L1
H-SSE-04	4	10	18.3	36.6
H-SSE-06	6	12	20.3	40.6
H-SSE-08	8	14	22.3	44.6
H-SSE-10	10	17	26.4	52.8
H-SSE-12	12	20	29.4	58.8

### H-SSV 联管弯头



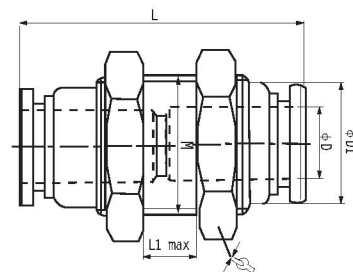
Model 型号	$\phi D$	$\phi D1$	L
H-SSV-04	4	10	18.3
H-SSV-06	6	12	20.3
H-SSV-08		14	22.3
H-SSV-10	10	17	26.4
H-SSV-12	12	20	29.4

### H-SSU 联管直通



Model 型号	$\phi D$	$\phi D1$	L
H-SSU-04	4	11	27
H-SSU-06	6	13	29.5
H-SSU-08	8	15	32.5
H-SSU-10	10	18	36.8
H-SSU-12	12	21	39.8

### H-SSM 隔板直通



Model 型号	$\phi D$	$\phi D1$	L	L1 max	M	$\curvearrowright$
H-SSM-04	4	10	27	8	M12X1	14
H-SSM-06	6	12	29.5	8	M14X1	17
H-SSM-08	8	14	32.5	8.5	M16X1	19
H-SSM-10	10	17	36.8	9.5	M20X1	24
H-SSM-12	12	20	39.8	11.5	M22X1	26